

**The Tank Killers: Images, 1945 Part 1**



SC-198614: Counterattack! 82d Airborne Division paratroopers follow a 636th Tank Destroyer Battalion TD past a wrecked Sherman near Arbrefontaine, Belgium, on 4 January 1945. (National Archives, Signal Corps photo)



111-ADC-3097\_1: A TD from the 703d Tank Destroyer Battalion works closely with the tanks and armored infantry from the 3d Armored Division in January 1945. (National Archives, Signal Corps film)



111-ADC-3097\_2: TDs from the 703d hide in the Ardennes forest. An M5 light tank is in the foreground. (National Archives, Signal Corps film)



111-ADC-3097\_3: The vehicles are so laden with extra supplies that they resemble Santa's sleigh. (National Archives, Signal Corps film)



111-ADC-3097\_4: The camouflage is actually a field expedient: White sheets! (National Archives, Signal Corps film)



111-ADC-3056\_4: One of the advantages the TD was conceived to have over the tank was the ability to see better in combat. This periscope view of the Ardennes from inside a Sherman illustrates how little the crew could see when buttoned up. (National Archives, Signal Corps film)



111-ADC-3097\_5: A view of the Ardennes from an M36 illustrates the superior battlefield awareness possible from the open turret. The only problem arose when the TD came under fire and the crewmen had to keep their heads down, such as when in battle. At least one battalion welded periscopes into the turrets. (National Archives, Signal Corps film)



111-ADC-3097\_6: Tank destroyers roll past a knocked-out Mark IV in Belgium in January 1945. (National Archives, Signal Corps film)



111-ADC-3040\_1: An M36 from the 703d Tank Destroyer battalion stands out against the snowy Belgian backdrop on 5 January 1945. (National Archives, Signal Corps film)



SC-198889: A Royal Tiger dispatched by the 628th Tank Destroyer Battalion in Coronne, Belgium, in January 1945. (National Archives, Signal Corps photo)

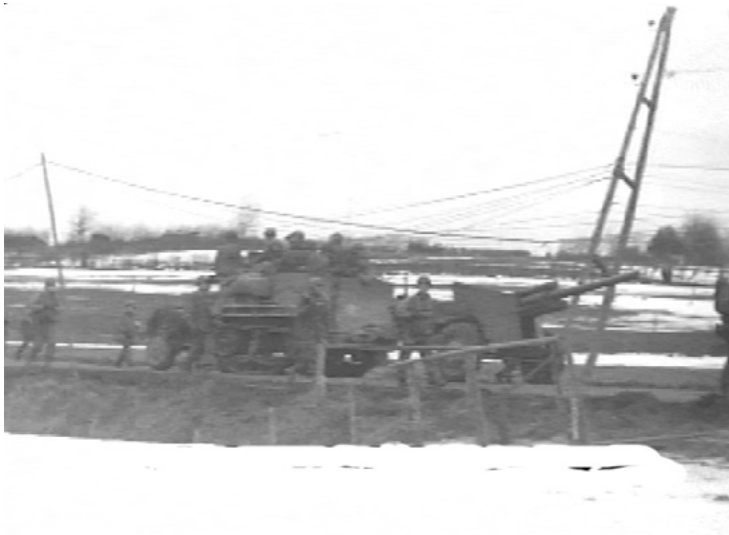


SC-421345: The crew of this camouflaged 776th Tank Destroyer Battalion M36 destroyed five panzers during a German counterattack at Oberwampach, Luxembourg, in January 1945. (National Archives, Signal Corps photo)





SC-279926: Shermans and M36s with the 7th Armored Division during fighting in eastern Belgium in January 1945. (National Archives, Signal Corps photo)



111-ADC-3040\_4: A prime mover and 3" gun roar through Belgium in January 1945. (National Archives, Signal Corps film)



111-ADC-3040\_5: An M10 watches over infantry advancing through Belgium in January 1945. (National Archives, Signal Corps film)



SC-199092: A wounded GI lies in the snow beside an 818th Tank Destroyer Battalion M10, awaiting evacuation during fighting at Wiltz, Luxembourg, on 10 January 1945. The TD crew appears to have covered the turret and deck with a large tarpaulin, perhaps to break up the vehicle's silhouette. (National Archives, Signal Corps photo)



SC-199025: A tank destroyer supporting the 90th Infantry Division's attack against the southern flank of the Bulge advances through a wrecked village on 12 January 1945. (National Archives, Signal Corps photo)



SC-199435: A 702d Tank Destroyer Battalion M18 carefully rounds an icy turn on 21 January 1945. (National Archives, Signal Corps photo)



111-CB-40\_1: The other Bulge: A TD unit pulls back during the first week of the German Nordwind offensive against Sixth Army Group in January 1945. (National Archives, Signal Corps film)



SC-199555: Nordwind is crushed, too. A 645th Tank Destroyer Battalion M10 fires an artillery mission near Sparsbach, France, in late January 1945. (National Archives, Signal Corps photo)



SC-199935: A TD from the 636th Tank Destroyer Battalion rolls through Oberhoffen, France, past a Sherman knocked out in the fight for the town. Medics are picking up a casualty in the center of the picture. (National Archives, Signal Corps photo)



SC-200031: A 636th Tank Destroyer Battalion M10 looks almost as worn out as Rohrwiller, France, on 4 February 1945. (National Archives, Signal Corps photo)



111-ADC-3056\_3: This M36 pictured in January 1945 has a forward-mounted machine gun and retains the antiaircraft .50-caliber. (National Archives, Signal Corps film)





SC-199129: View of the steel turret cover eventually installed by the 813th Tank Destroyer Battalion on its M10s to protect the crews from shrapnel and grenades, January 1945. (National Archives, Signal Corps photo)



111-ADC-3040\_2: The crew of this M10 in Belgium has sandbagged the front of the turret for greater protection against small arms fire. (National Archives, Signal Corps film)



SC-200040: Back to the Siegfried Line: An M10 supporting the 5th Infantry Division fires at a pillbox on the far side of the Sauer River near Echternach, Belgium, on 7 February 1945. (National Archives, Signal Corps photo)



SC-201386: A Normandy veteran M10 enters Düren, Germany, in late February 1945. (National Archives, Signal Corps photo)



111-ADC-2131\_1: The 702d Tank Destroyer Battalion motors to a pontoon bridge to cross the Roer River on 26 February 1945. This M36 has extra armor plates welded onto the glacis in front of the driver and assistant driver positions. (National Archives, Signal Corps film)



111-ADC-1945\_2: A heavily sandbagged M36, probably from the 823d Tank Destroyer Battalion, presses eastward beyond the Roer River with the 30th Infantry Division on 28 February 1945. The gun barrel has been wrapped with camouflage "cheese cloth" to break up its sharp outline. (National Archives, Signal Corps film)