

Weapons of Tank Battalions Illustrations

Chapter 5: Specials and Variants



SC-191908-S: A Tank dozer in Normandy in July 1944. (NARA, Signal Corps photo)



SC-192513: A tank dozer crashes through a hedgerow in Normandy on 13 July 1944. Experience showed that the dozers were capable of breaching about 50 percent of hedgerows. (NARA, Signal Corps photo)



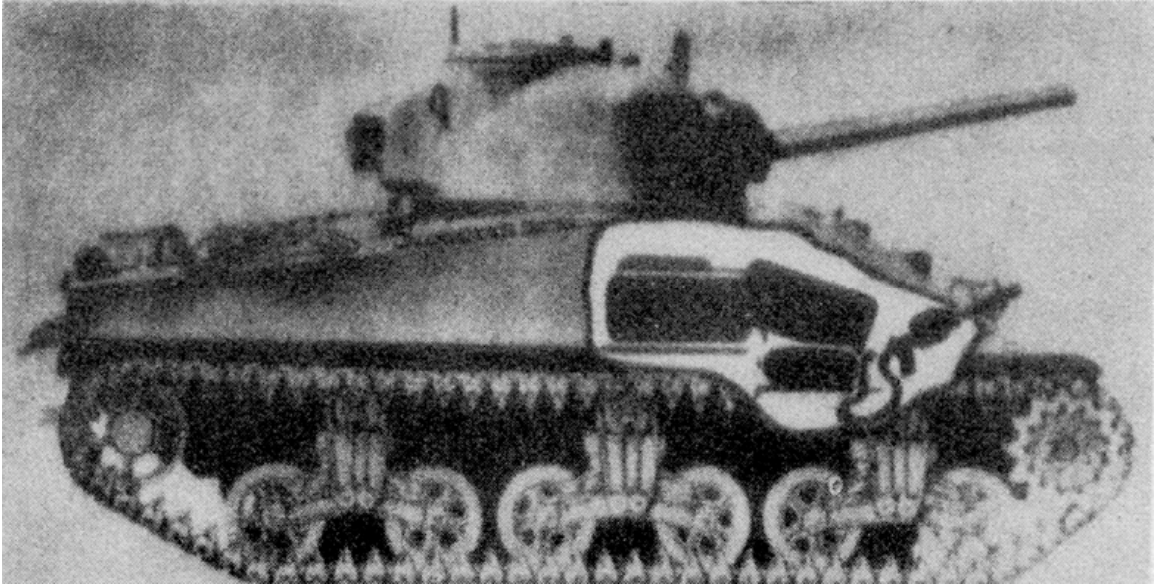
SC-194744: A 1st Armored Division tank dozer opens the way for a column in Italy in September 1944. (NARA, Signal Corps photo)



SC-199208: A tank dozer leads an armored column through Malmedy, Belgium, on 13 January 1945 clearing snow where necessary. The tank dozer was not a particularly good plow as deep snow mounded up quickly in front of the straight-on blade. (NARA, Signal Corps photo)



Army2: One of only four Sherman Crocodiles to enter American service. The nozzle is to the right of the bow gunner's hatch, and the trailer carries the fuel. (U.S. Army photo, records of the Armored Board)



Army3: Diagram of the installation of the E4-5 flamethrower. (From ETOUSA General Board report on special armored equipment)



C-AT-44-3097: Bow-mounted flamethrower during a demonstration. (NARA, Signal Corps photo) [color photo]

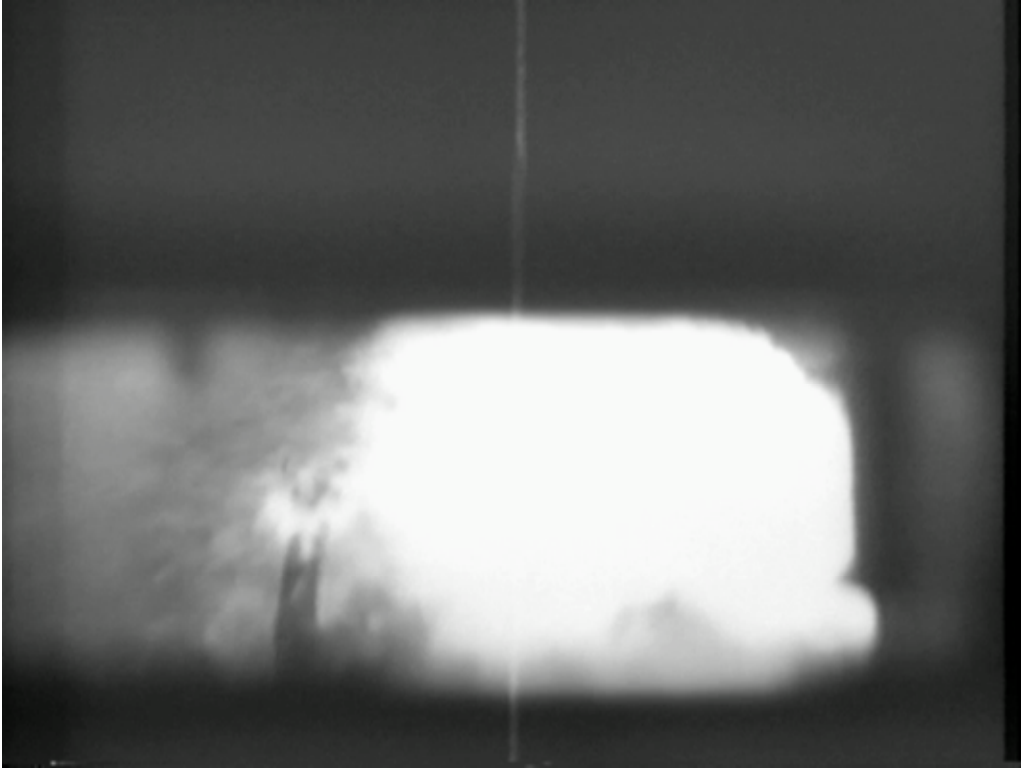


SC-196727-S: A 709th Tank Battalion E4-5 flamethrower in action near Zweifall, Germany, on 24 November 1944. This tank still has a "green dozer" hedgerow buster from Normandy. The wartime censor has blacked out unit markings. (NARA, Signal Corps photo)





SC-209094: A Sherman with a bow-mounted flamethrower fires at a Japanese-occupied cave on Okinawa in June 1945. The relatively short range was not a problem in the Pacific because the Japanese lacked the bazooka-type weapons fielded by the Germans, which could kill a tank at about the same distance. (NARA, Signal Corps photo)



111-CB-48\_1: Periscope view from inside a Sherman of a bow flamethrower in action against a Japanese bunker. (NARA, Signal Corps film)



SC-209124: A tank from the 713th Tank Battalion, Armored Flamethrower, hoses down a Japanese position on Okinawa on 15 June 1945. (NARA, Signal Corps photo)



SC-208302: The main armament flamethrower could burn out an entire hillside. Here, a tank from the 713th goes to work on Okinawa's Hill 178 on 21 April 1945. (NARA, Signal Corps photo)



737thJumbo: An M4A3E2 Jumbo assault tank from the 737th Tank Battalion moves forward, probably near the Sauer River in January 1945. (NARA, 737th Tank Battalion records)



SC-196503: A newly arrived M4A3E2 Jumbo in November 1944 offers a good view of the commander's cupola also found on the 76mm M4 turret. The added loader's hatch is closed. Note the massively armored turret front, including the gun mantlet. The seam from the extra glacis armor is visible in front of the hull hatches. (NARA, Signal Corps photo)



111-CB-26\_1: A Jumbo fires its 75mm gun at a target in Aachen during the pre-attack bombardment of the city in early October 1944. (National Archives, Signal Corps film)



111-ADC-4025\_3: Not satisfied with the Tiger-tank-thick glacis on the Jumbo, the 750th Tank Battalion poured a layer of concrete on top. (National Archives, Signal Corps film)





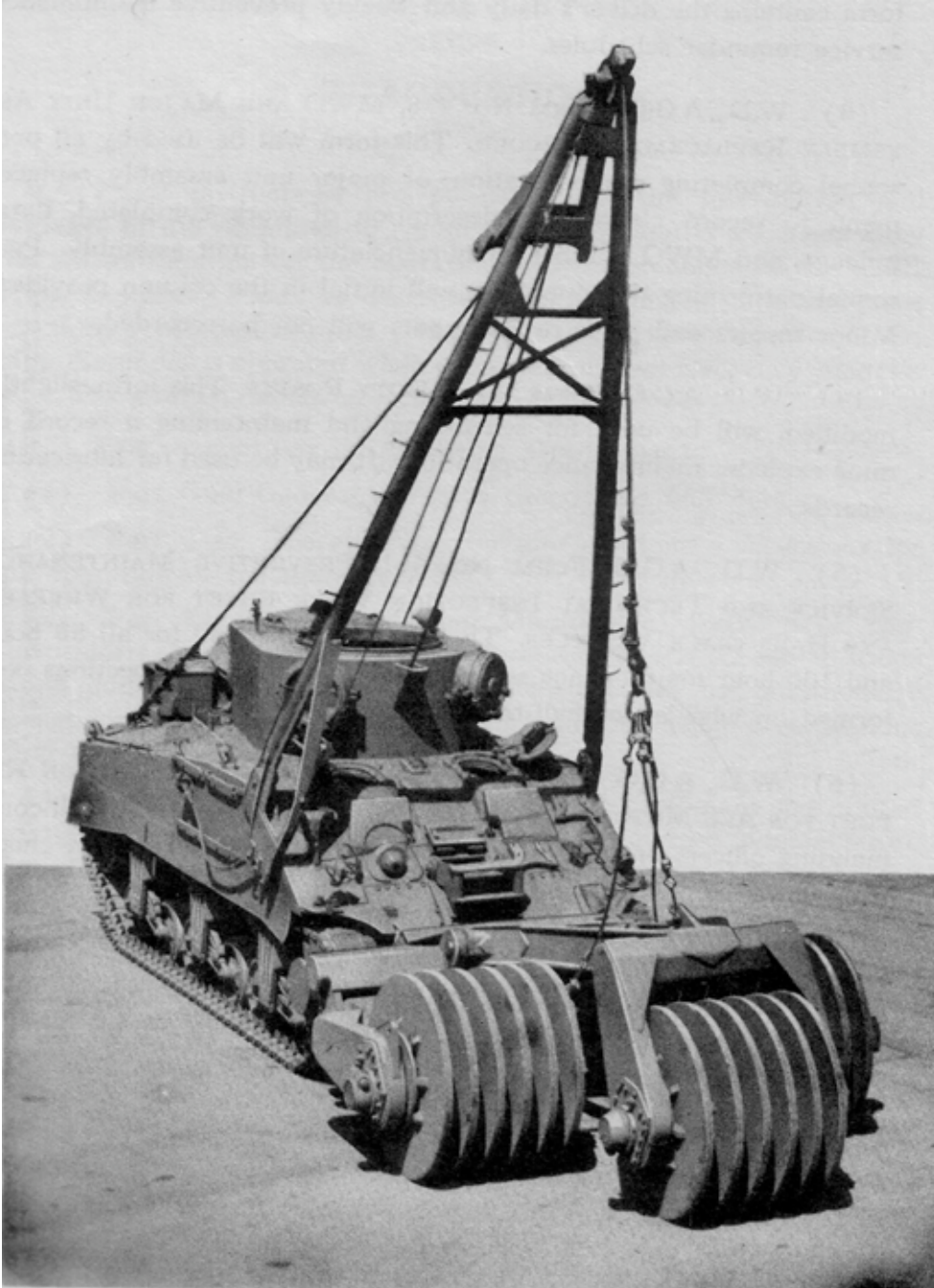
SC-203178: A 4th Armored Division Jumbo (76mm) leads a tank column in Germany. The M4A3E2 often took point because it had the best chance of surviving the first shot fired from ambush. Note the wider track achieved by the standard grousers. (NARA, Signal Corps photo)



SC-190899: A Scorpion flail tank demonstration in North Africa in August 1943. Note the outboard engine on the right side. (NARA, Signal Corps photo)



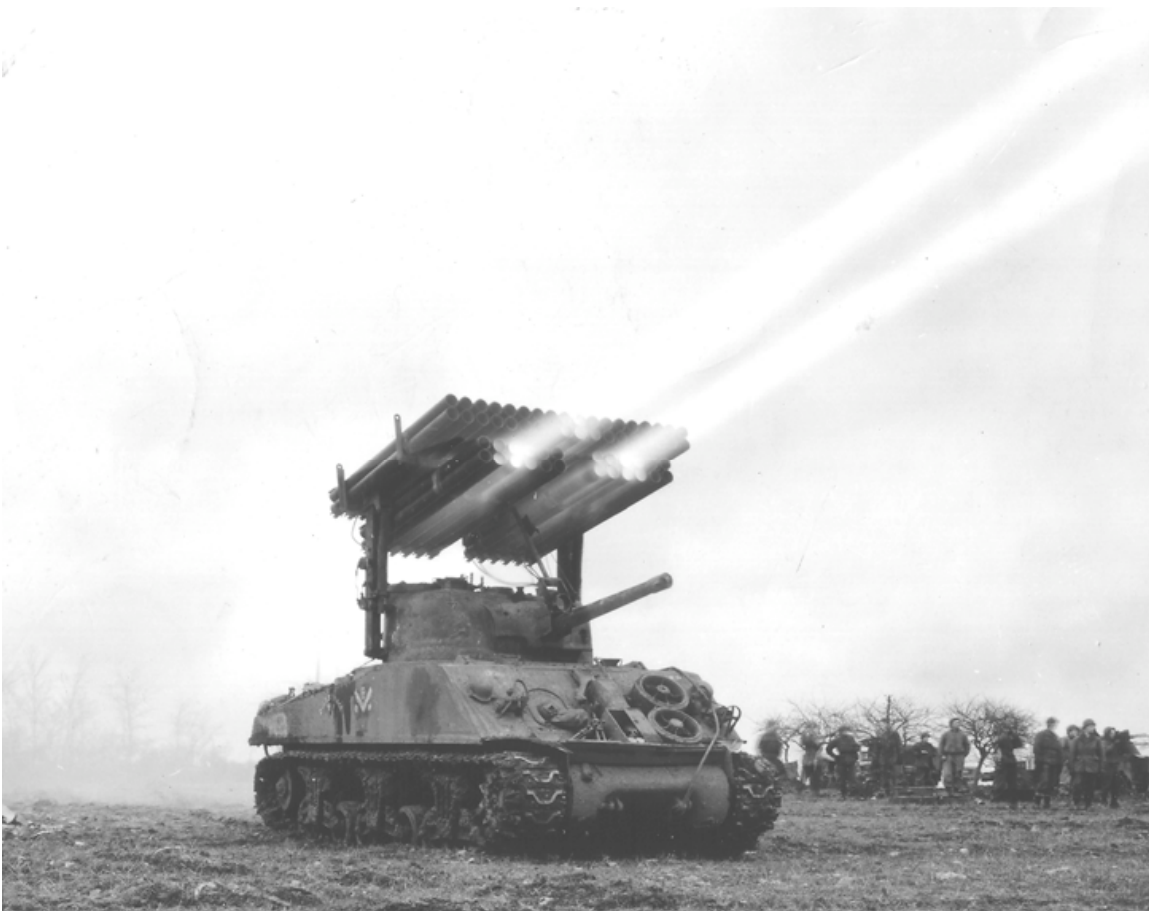
SC-195471: The Crab flail tank was the most important mine clearer in American service but was far from perfect. (NARA, Signal Corps photo)



TM 9-736\_1: The T1E1 mine roller never really worked well in practice. (NARA, records of the Government Printing Office)



SC-242926: A 739th Tank Battalion (Mine Exploder) T1E3 "Aunt Jemima" (hint: stacked pancakes) clears a road near Beggendorf, Germany, in December 1944. (NARA, Signal Corps photo)



SC-202292-S: A Sherman fitted with the late-model T34 rocket launcher fires in March 1945. (NARA, Signal Corps photo)



Army16: A 13 million-candlepower arc light projected through the vertical slit in the turret of the CDL tank. This U.S. Army CDL is based on an M3A1 medium tank. (U.S. Army photo)